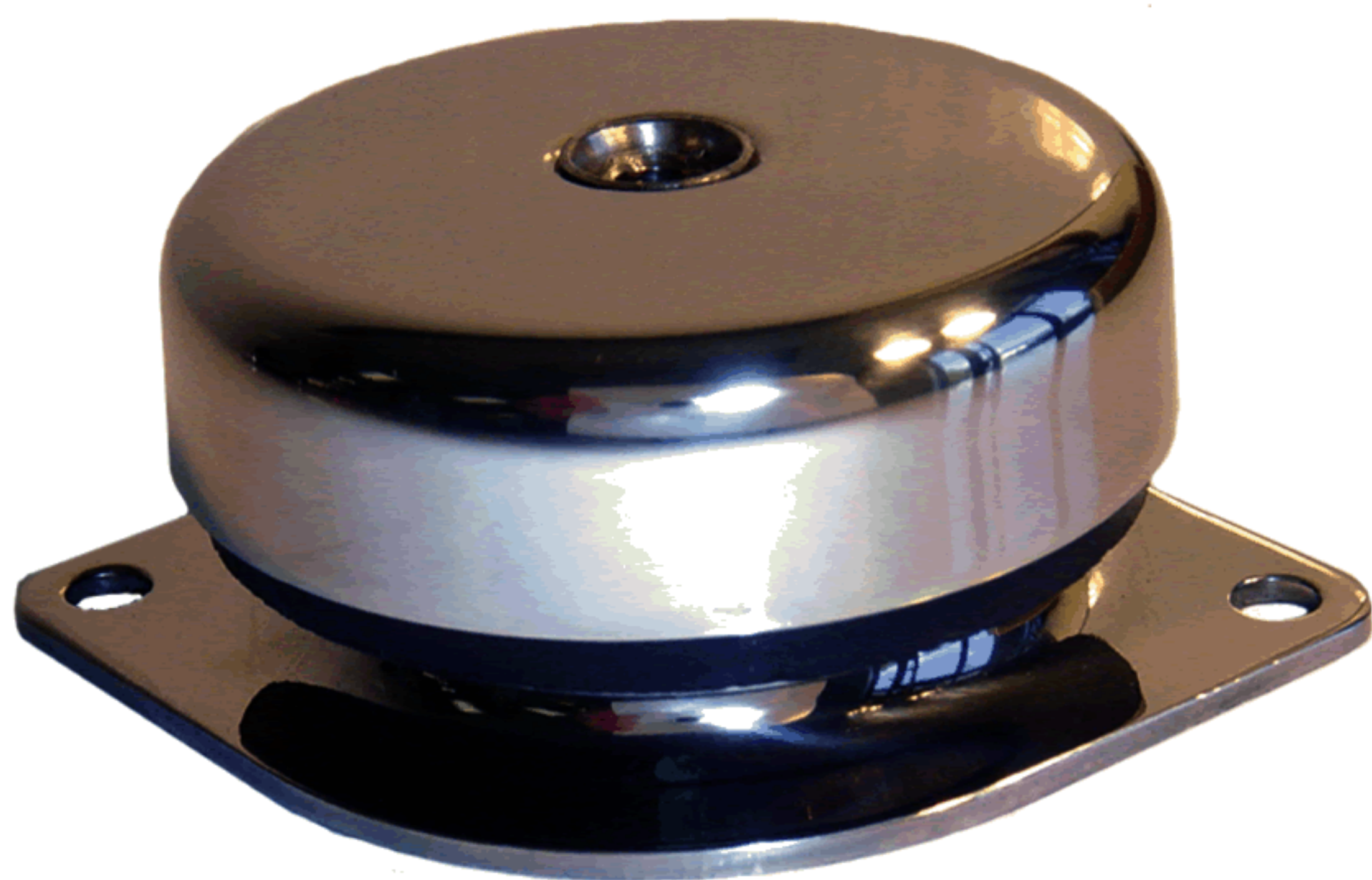




# A POLISHED & PASSIVATED 100 % 316 STAINLESS STEEL VIBRATION ISOLATION MOUNT THAT WORKS AS GOOD AS IT LOOKS!

- **Industry first:** 100 % 316 stainless steel, polished and passivated vibration mount; No more rust stains!
- **Universal design:** By changing rubber durometer (stiffness) at our factory prior to shipping, this single mount has the range to isolate something as small as a 12 lb. pump all the way up to a large 300 lb. dive compressor.
- **Universal mounting configuration:** They can be used to mount your equipment in compression, tension and shear applications. No matter how the mount is oriented or the load is directed (sideways, upside down), the elastomer is always in compression.
- **Many Applications:**
  - Pumps
  - Blowers
  - Compressors
  - Air Conditioning Units
  - Ice Makers
  - Exhaust components
  - Electronics
  - Battery Chargers
  - Instruments
  - Stanchions
  - Fans
  - Small Generators
- **Fail Safe Construction :** These compact low profile isolators have interlocking components of stainless steel which means that they cannot fail in severe situations.
- **Neoprene rubber & polyurethane components:** Resistant to oils, fuels, water and ozone.

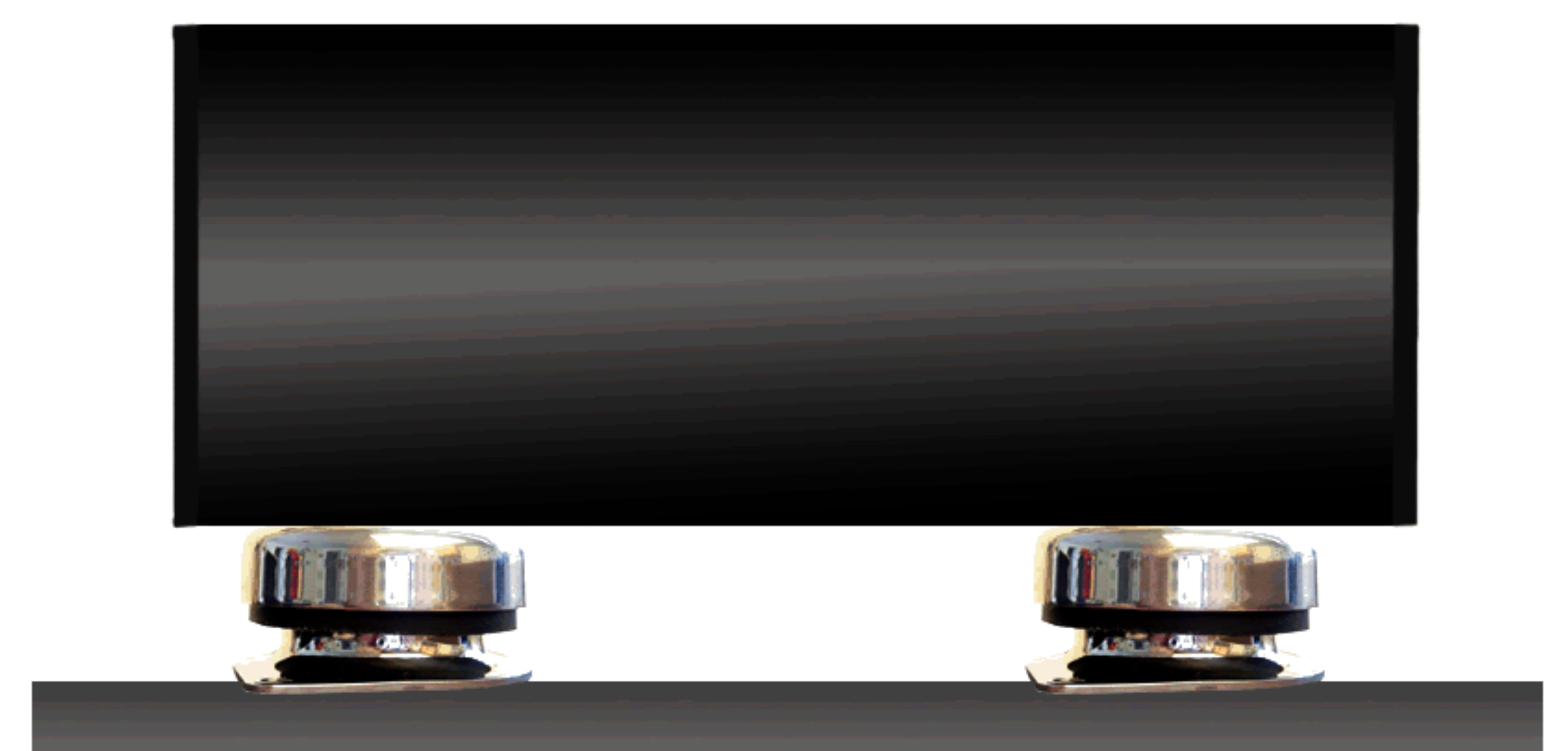
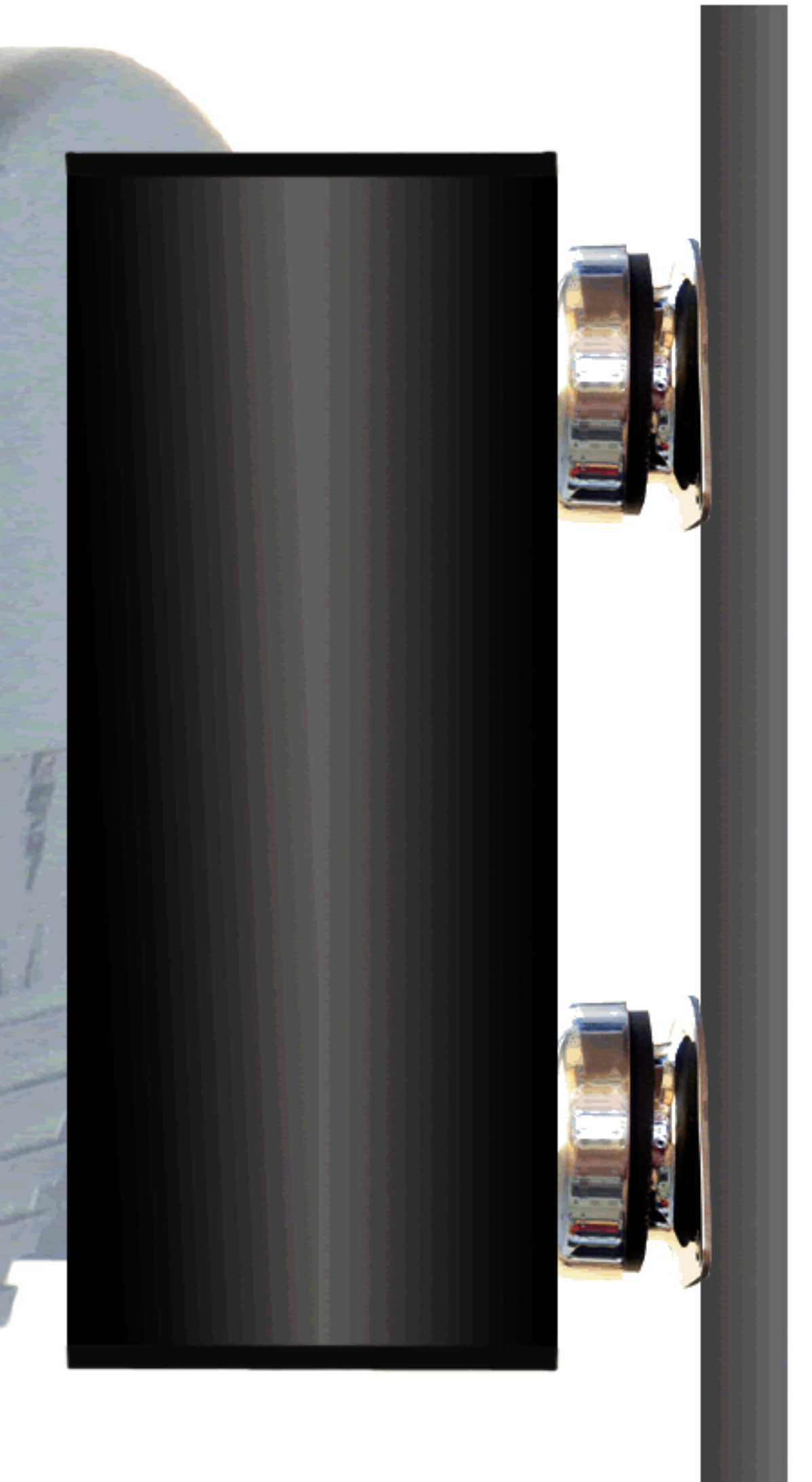


- **Easy to install:** "Diamond" base makes installation a snap. 1/4" - 20 equipment base hole thread standard, 5/16" - 18 thread optional.
- Great resistance to shock makes the Novicon cup-mount ideal for protecting sensitive shipboard electronics and equipment.
- Competitively priced for such high quality.
- Optional white marine grade powder coat finish available.
- Other custom styles and configurations available for specific applications for boatbuilders on an as needed basis...  
**JUST ASK!**



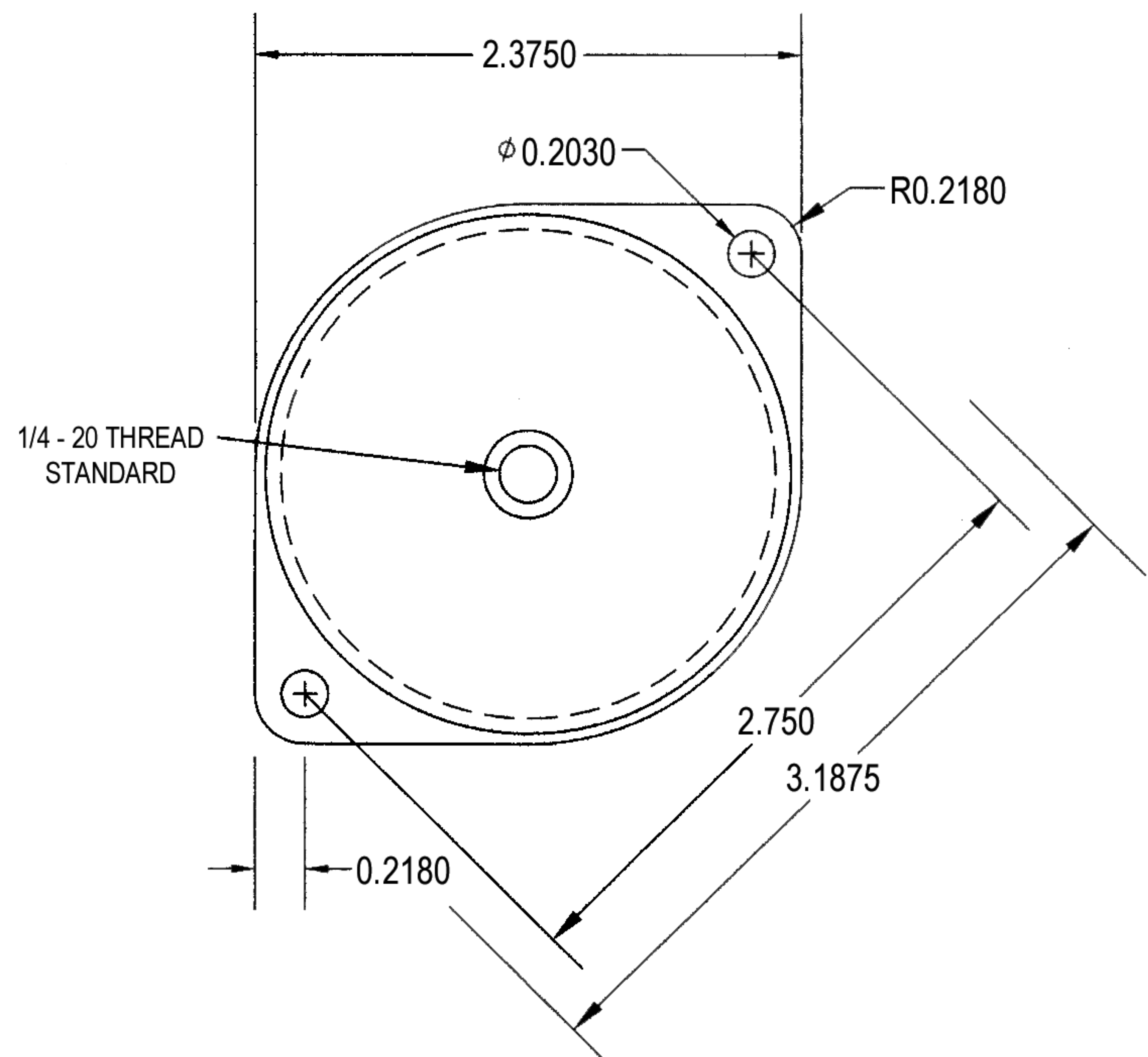
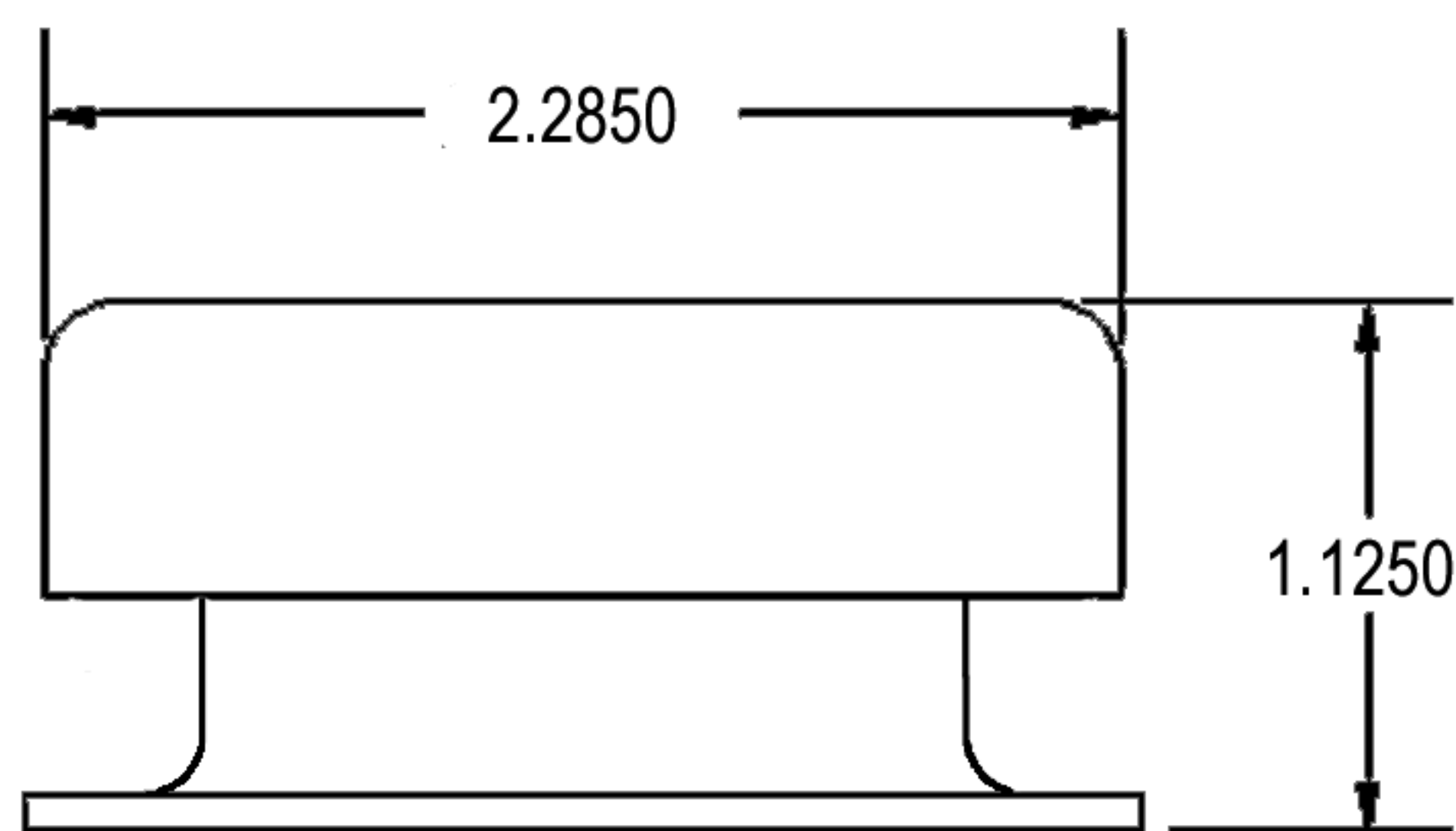
A Noise & Vibration Solutions Company

400 ROBERTS ROAD  
OLDSMAR, FL 34677  
PH: (813) 854-3235  
FAX: (813) 854-1767  
[www.noviconusa.com](http://www.noviconusa.com)





# NOVICON<sup>®</sup> STAINLESS STEEL VIBRATION ISOLATION CUP-MOUNT (MORE THAN JUST A PRETTY FACE!)



For maximum performance try to match mount with the highest possible load  
IE: If a device weighs 60 Lbs, choose the NCM-275-2 over the NCM-275-3.

PART #	LOAD RANGE PER MOUNT (LBS)	LOAD RANGE PER DEVICE* (LBS)	COLOR CODE
NCM 275-1	3 - 10	12 - 40	RED
NCM 275-2	10 - 15	40 - 60	GREEN
NCM 275-3	15 - 25	60 - 100	ORANGE
NCM 275-4	25 - 40	100 - 160	BLUE
NCM 275-5	40 - 75	160 - 300	BLACK

\* BASED ON 4 MOUNTS @ BASE

Other styles and configurations available for specific  
applications for boatbuilders on an as needed basis...  
JUST ASK!



400 ROBERTS ROAD OLDSMAR, FL 34677  
PH: (813) 854-3235 FAX: (813) 854-1767 [www.noviconusa.com](http://www.noviconusa.com)